



Newly Renovated Office Space

67A Mountain Blvd, Warren Twp,
Somerset County, New Jersey

PROPERTY DESCRIPTION

Recently renovated 28,570 SF two story brick/block constructed office building located in the center of Warren. Renovations include new lobby, common area upgrades, bathrooms and exterior improvements including landscaping and new monument sign. Less than 3 miles South of I-78, Exit 36 and 1.8 miles North of SR 22 & Warrentville Rd.

AVAILABLE SPACE

2nd Floor Tenant C:
5,921 SF net usable
6,809 SF gross rentable

RENTAL RATES

\$19.50 psf plus tenant Electric

OCCUPANCY

Immediate

PARKING

88 On-site parking spaces

ZONING

BR40 Zone allows a wide range of professional office uses, including medical/dental

**FOR ADDITIONAL INFORMATION
CONTACT EXCLUSIVE LEASING AGENT**

Christian Harrington

Associate- Brokerage Department

908.604.6900 x 119

charrington@silbertrealestate.com

SILBERT

REALTY & MANAGEMENT COMPANY, INC.

152 Liberty Corner Road
Suite 203
Warren, NJ 07059

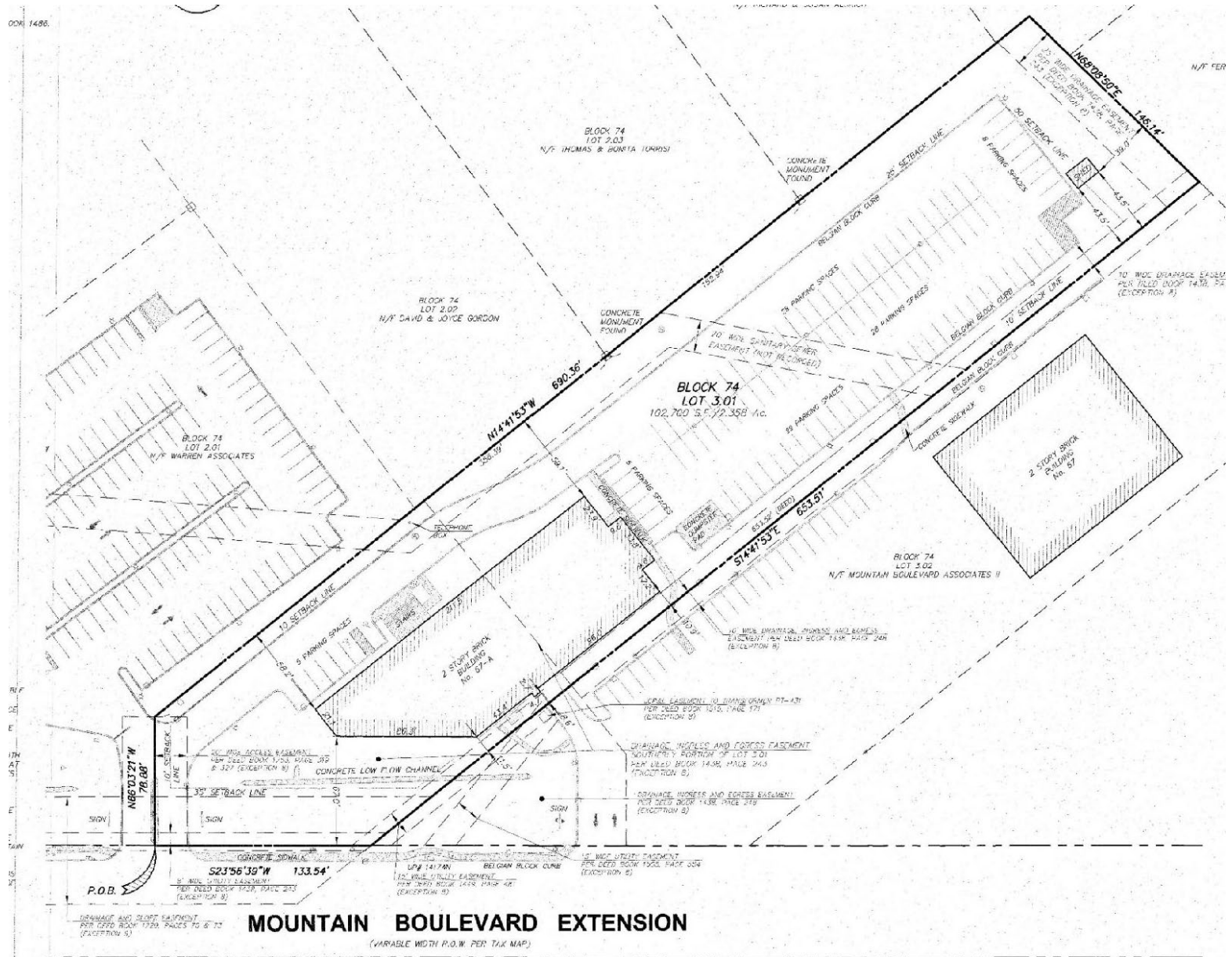


Visit Our Website: WWW.SilbertRealEstate.com

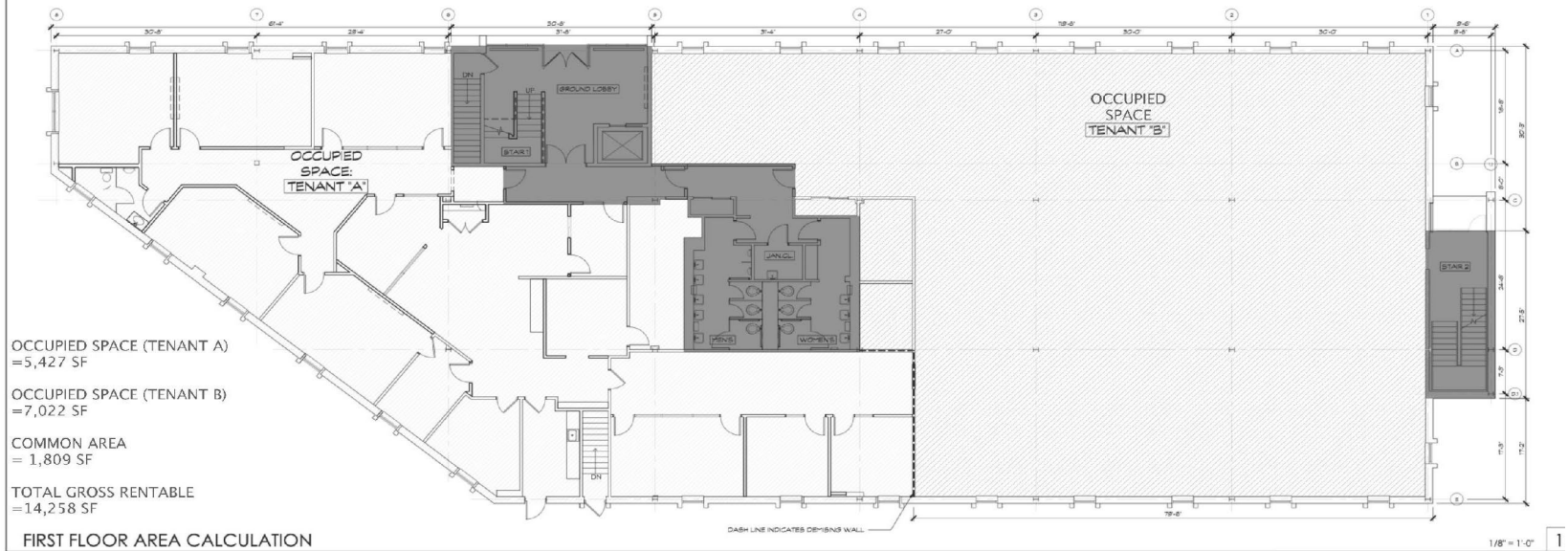
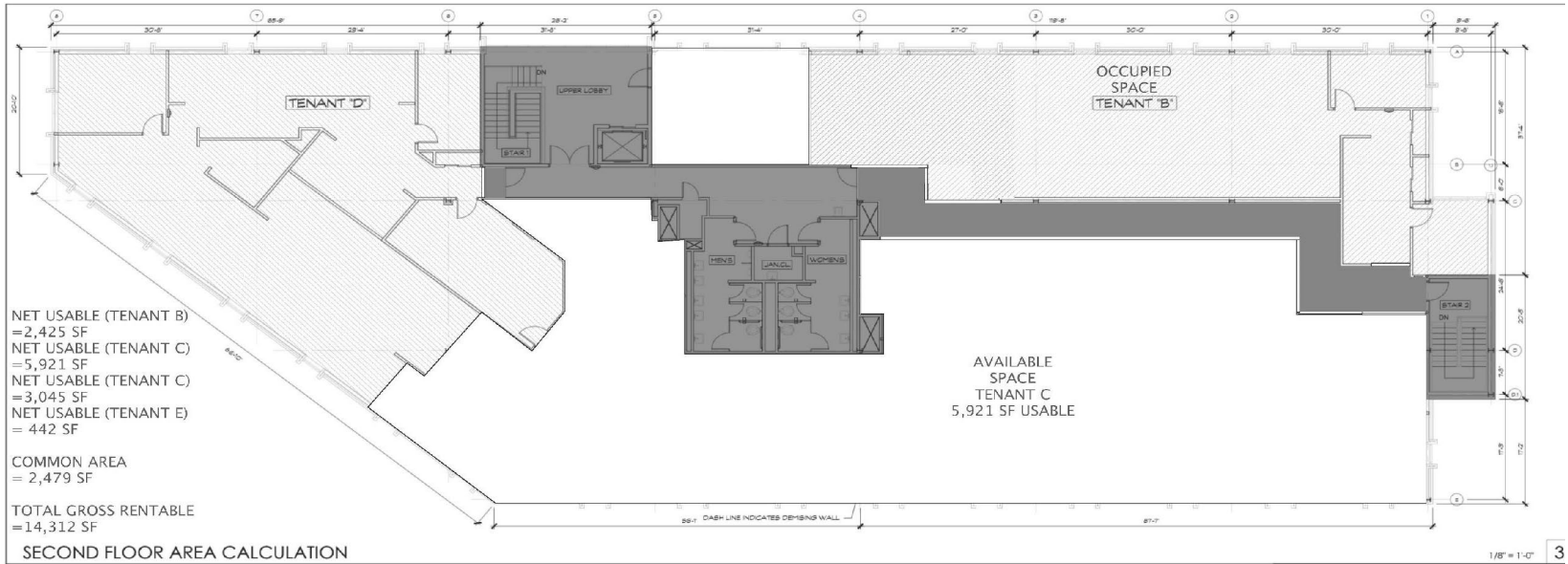
Lobby Photos & Monument Sign



Site Plan



Leasing Plan



Trade Aerial

