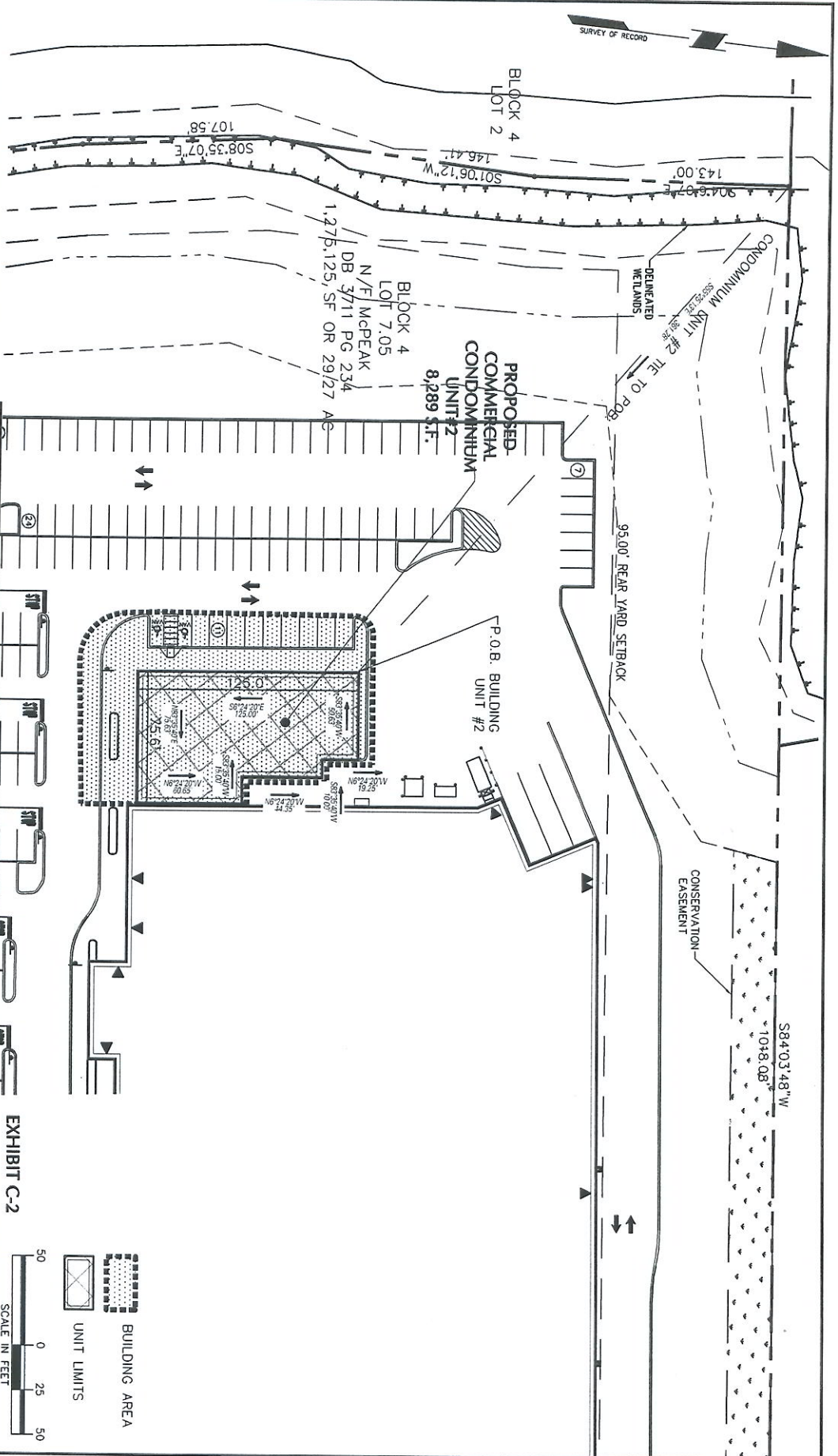


NOTE: ALL FEATURES SHOWN ON THIS PLAN ARE PROPOSED AND BASED UPON THE PRELIMINARY/FINAL SITE PLAN APPLICATION FOR THE TARGET RETAIL CENTER, WASHINGTON TOWNSHIP, MORRIS COUNTY PROJECT, DATED JANUARY 10, 2003, LAST REVISED 6/25/07 BY LANGAN ENGINEERING AND ENVIRONMENTAL SERVICES.



JOSEPH MELE
 PROFESSIONAL ENGINEER & LAND SURVEYOR
 N.J. LIC. No. GB43239
 DATE

LANGAN
 ENGINEERING & ENVIRONMENTAL SERVICES
 River Drive Center 1
 P. 201.294.6800
 www.langan.com
 Elmwood Park, NJ 07007
 F. 201.294.0966

CONDOMINIUM PLAN PREPARED FOR
TARGET WASHINGTON
46 RETAIL CONDOMINIUM
 WASHINGTON TOWNSHIP
 MORRIS COUNTY
 Project No. 1724203
 Date 07-27-07
 Scale 1" = 50'
 Dwg. No. EXHIBIT C-2

