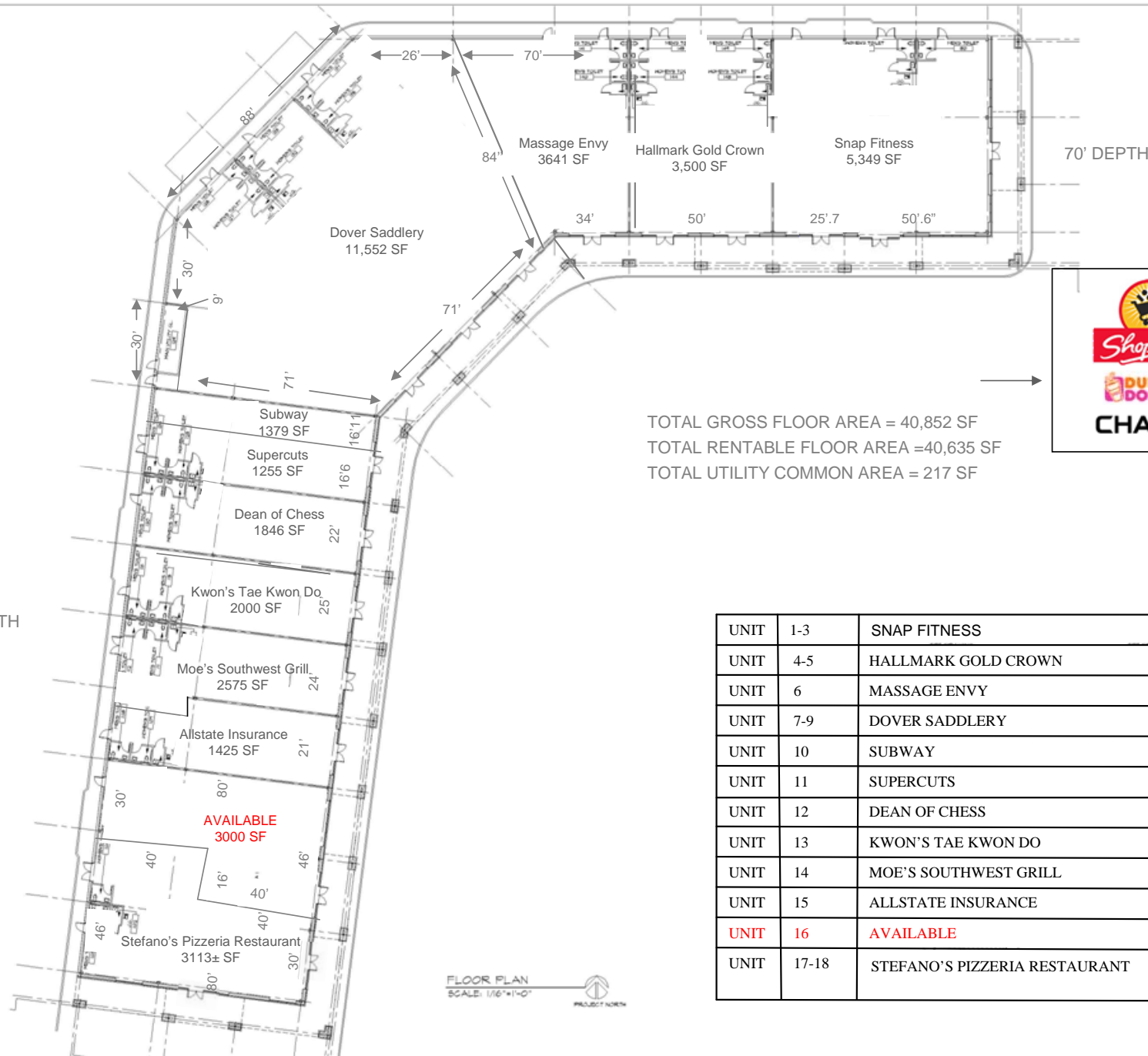


# CEDAR GLEN –BRANCBURG, SOMERSET COUNTY, NJ

CEDAR GLEN, 3150 ROUTE 22, BRANCBURG, NJ 08876

MARKETING USE ONLY



TOTAL GROSS FLOOR AREA = 40,852 SF  
 TOTAL RENTABLE FLOOR AREA = 40,635 SF  
 TOTAL UTILITY COMMON AREA = 217 SF

UNIT	1-3	SNAP FITNESS
UNIT	4-5	HALLMARK GOLD CROWN
UNIT	6	MESSAGE ENVY
UNIT	7-9	DOVER SADDLERY
UNIT	10	SUBWAY
UNIT	11	SUPERCUTS
UNIT	12	DEAN OF CHESS
UNIT	13	KWON'S TAE KWON DO
UNIT	14	MOE'S SOUTHWEST GRILL
UNIT	15	ALLSTATE INSURANCE
UNIT	16	AVAILABLE
UNIT	17-18	STEFANO'S PIZZERIA RESTAURANT

FLOOR PLAN  
 SCALE: 1/16"=1'-0"  
 PROJECT NORTH

REVISION: \_\_\_\_\_ DATE: \_\_\_\_\_  
 DATUM ELEVATION: 0'-0"  
**OVERALL FLOOR PLAN**  
 New Market Center  
 Cedar Glen  
 Lot & Block 14-0  
 Branchburg NJ  
  
 New Jersey, NJ NJ Reg. No. 9178  
 NY Reg. No. 01808  
 PA Reg. No. 011511  
 MD Reg. No. 10813  
 © 2005 Architecture Plus, Inc.  
 SCALE: 1" AS NOTED  
 DRAWN BY: ML CHD BY: MGC  
 DATE: Progress  
 PROJ. NO.: 04-120  
 DWG. NO.: AI